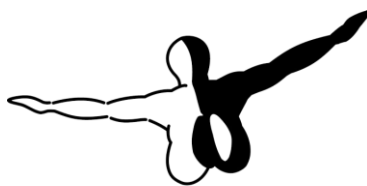


Aerosoft Vilnius International X



aerOSOFT™



CONTENTS

CONTENTS	1
INTRODUCTION	2
COPYRIGHTS	2
CREDITS.....	3
SYSTEM REQUIREMENTS	3
CONTACT SUPPORT	3
INSTALLATION AND REMOVAL	3
SEASONS	4
FINDING THE AIRPORT.....	4
DISPLAY SETTINGS	4
GRAPHICS MENU	4
SCENERY SETTINGS	5
INFORMATION FOR VILNIUS INTERNATIONAL	6
RADIO COMMUNICATION FREQUENCIES	6
RUNWAYS	6
F.A.QS.	6
AEROSOFT LAUNCHER	7
CHARTS	7

INTRODUCTION

Vilnius International Airport (IATA : VNO, ICAO: EYVI) (or in Lithuanian: Tarptautinis Vilniaus oro uostas) is the largest civil airport in Lithuania. It was designed in the standard Soviet airport way (down to the murals of soldier comrades) in the 1950s for just 20 aircraft movements a day. When Lithuania became part of the EU and the economy blossomed the airport got a new highly modern terminal in 2007. The airport now handles close to 1, 5 million passengers every year.

Lithuania is a proud country with a rich history and a bright future. The economy is hit by the 2007 economic crises but just before that it was one of the fastest growing economies in the EU. As the basic elements of the nation did not change there is a solid chance the country will become a regional power to be reckoned with in the decades to come. The modern airport will be a major factor in that development.

COPYRIGHTS

The manual, documentation, video images, software, and all the related materials are copyrighted and cannot be copied, photocopied, translated or reduced to any electronic medium or machine legible form, neither completely nor in part, without the previous written consent of AEROSOFT. THE SOFTWARE IS FURNISHED «AS IS» AND IT DOES NOT COME FURNISHED WITH ANY GUARANTEE IMPLICIT OR EXPRESS. THE AUTHOR DECLINES EVERY RESPONSIBILITY FOR CONTINGENT MALFUNCTIONS, DECELERATION, AND ANY DRAWBACK THAT SHOULD ARISE, USING THIS SOFTWARE.

Copyright © 2011 AEROSOFT/ KOZMA. All rights reserved. Microsoft Windows, and Flight Simulator are registered trademarks or trademarks of Microsoft Corporation in the United States and/or other Countries. All trademarks and brand names are trademarks or registered trademarks of the respective owners. Copyrights are serious stuff. If you find any pirated copies of this software please notify us at support@aerosoft.com. We will make sure reports of copyrights violation are rewarded.

Aerosoft GmbH
Lindberghring 12
D-33142 Büren
Germany
www.aerosoft.com

CREDITS

Concept:	Arvydas Cetyrkovskis
Programming/ modelling:	Andras Kozma, Arvydas Cetyrkovskis, Gabor Kovacs
Project Management:	Mathijs Kok (Aerosoft)
Manual, documentation:	Mathijs Kok (Aerosoft)
Installer:	Andreas Mügge
Testing:	Several good folks who will all be getting a copy

SYSTEM REQUIREMENTS

- Intel Core 2 Duo E6850 CPU (Core 2 Quad advised)
- 2 GB RAM
- Direct X 9 compatible Graphics Card with minimal 512 MB
- Microsoft FSX (with SP2 or Acceleration), FS2004
- Windows XP, Windows VISTA, Windows 7 (fully updated)
- Adobe Acrobat® Reader 8 minimal to read and print the manual ⁽¹⁾

⁽¹⁾ Available for free, download at: <http://www.adobe.com/prodindex/acrobat/readstep.html>

CONTACT SUPPORT

Support for this product is done by Aerosoft. We prefer to do support on the support forum for one simple reason, it is fast and efficient because customers help customers when we are sleeping.

Aerosoft forums: <http://www.forum.aerosoft.com/>

We feel strongly about support. Buying one of our products gives you the right to waste out time with questions you feel might be silly. They are not.

INSTALLATION AND REMOVAL

Installation is simple. Unzip the file that you downloaded and start the exe file you downloaded and follow the instructions on your screen. Make sure FSX (or FS2004) is closed and we do advise you to reboot your system before installing. Make sure you are logged on as Administrator on the machine! After installing it can help to defragment your hard disk. **Do note that the files are personalized on installation.** When you share them with others you also share personal details.

After installation has finished the Aerosoft Launcher will start and the

Removal should never be done manually but only using the software removal applet you will find the Windows Control panel.

SEASONS

Lithuania has a mild climate compared to other countries at the same latitude. This is mainly because of the tempering effects of the sea. But it does get a good deal of snow and the scenery reflects this between November 1st and March 31st. If you find the 3d grass used in the scenery annoying in the snowy season you can use the Season Tool (part of the Aerosoft Launcher, you can disable it with the Seasons Tool that is part of the Aerosoft Launcher. You will find it under the TOOLS dropdown menu. Select the product you wish to set the season for and select scroll the season you want in front. You can also find the Season program via the Windows Start menu under Aerosoft | Vilnius.



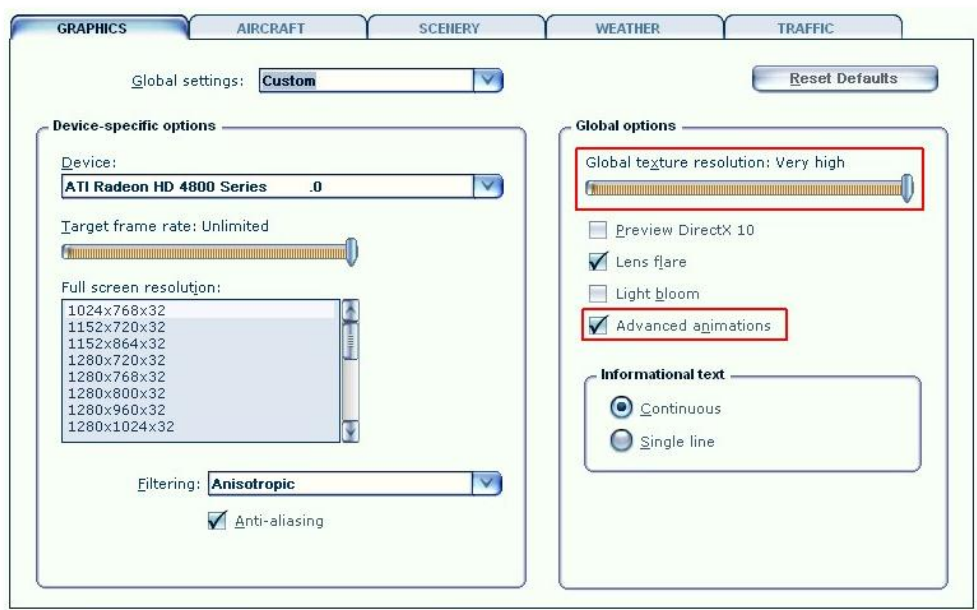
FINDING THE AIRPORT

You will find the airport using either the airport name (Vilnius Int.), the city name (Vilnius) or the airport ID (EYVI).

DISPLAY SETTINGS

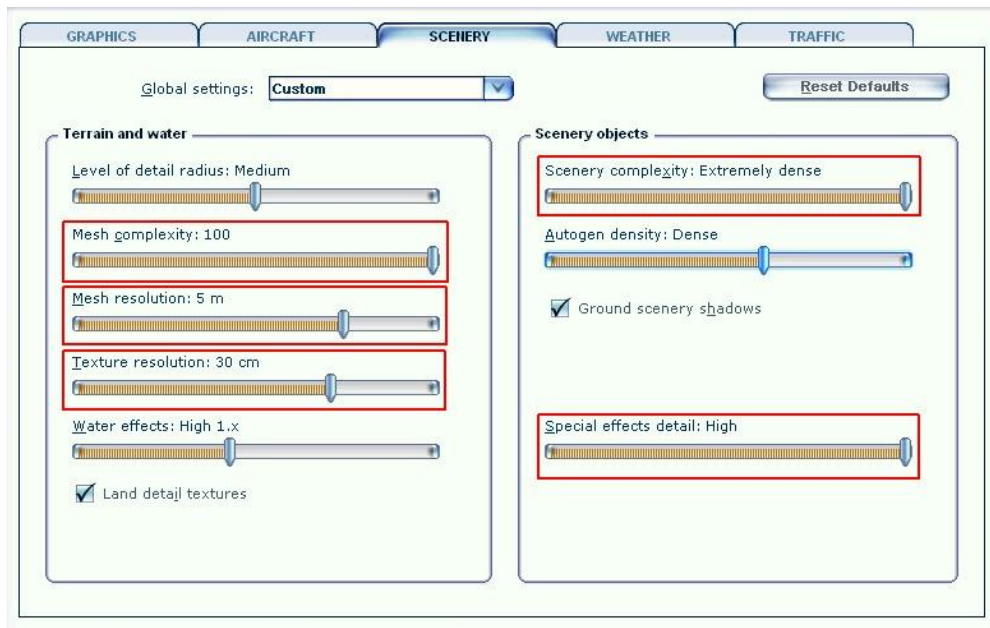
In order to change your scenery settings, go to Settings -> Display. All settings that are important to see this scenery correctly are marked in red and need to be shown. All other settings are to your own liking. The settings shown are for the FSX version of this project but you will find the same settings in FS2004.

GRAPHICS MENU



- **Global texture resolution** should be at **Very high** to get the full detail in textures.
- **Advanced animations** has to set to **ON**.
- We advise to keep **Light bloom** set to **On** will allow you to see the lighting in more detail and the low demands on fps should make this setting possible.
- We advise to keep **Target frame rate** set to **Unlimited**.

SCENERY SETTINGS



- **Mesh** is important for this scenery. Set **Mesh Complexity** to **100** and **Mesh resolution** to **5 meters**.
- **Texture resolution** should be at **30 cm** or less to get the best resolution of the aerial image under the 3D objects.
- **Special effects details** should be on **High** to see all the special animations.
- For best results we recommend to set **Autogen Density** to **dense**. But keep in mind not all systems can handle so many details!
- **Ground scenery shadows** can be **on** or **off** depending on your own preference.

INFORMATION FOR VILNIUS INTERNATIONAL

- Airport: Vilnius International Airport
- Country: Lithuania
- ICAO ID: EVYI
- IATA ID: VNO
- Time: UTC+2(+3DT)
- Location: E 025° 17' 08.76"/N 54° 38' 02.88"
- Elevation: 646 feet (169 meters)
- Type: Civil
- Magnetic Variation: 006° E (2008)
- Beacon: Yes
- Operating Hours: 24 HOUR OPERATIONS

RADIO COMMUNICATION FREQUENCIES

- Tower 118.2
- ATIS 125.8
- Approach 120.7
- Info: 123.85

RUNWAYS

- **Runway 02:** 2500 x 50 meters (8202 x 164 feet) Asphalt , ILS
 - Longitude: 25.278528 / E 025° 16' 42.70"
 - Latitude: 54.623686 / N 54° 37' 25.27"
 - End Elevation: 594.0 ft
 - Alignment: 016.0
 - Lights: Sequenced flashing, centerline, high intensity, ALFS-1, PAPI
- **Runway 20:** 2500 x 50 meters (8202 x 164 feet) Asphalt , ILS
 - Longitude: 25.293053 / E 025° 17' 34.99"
 - Latitude: 54.644647 / N 54° 38' 40.73"
 - End Elevation: 646.0 ft
 - Alignment: 0196.0
 - Lights: centerline, high intensity, ALFS-1, PAPI

F.A.QS.

Q: Is this add-on DX10 compatible?

A: Apart from the standard issue with lights, yes.

Q: Is this add-on compatible with other add-ons in the area?

A: As far as we know yes.

Q: There seem to be issues with the airport lighting at day/night transitions. Is this normal?

A: No but it isn't curable. FSX sometimes has its own ways of switching day/night textures. If you face any texture or scenery problems, open the scenery library and click OK (or use the "refresh scenery" shortcut) to reload scenery and textures.

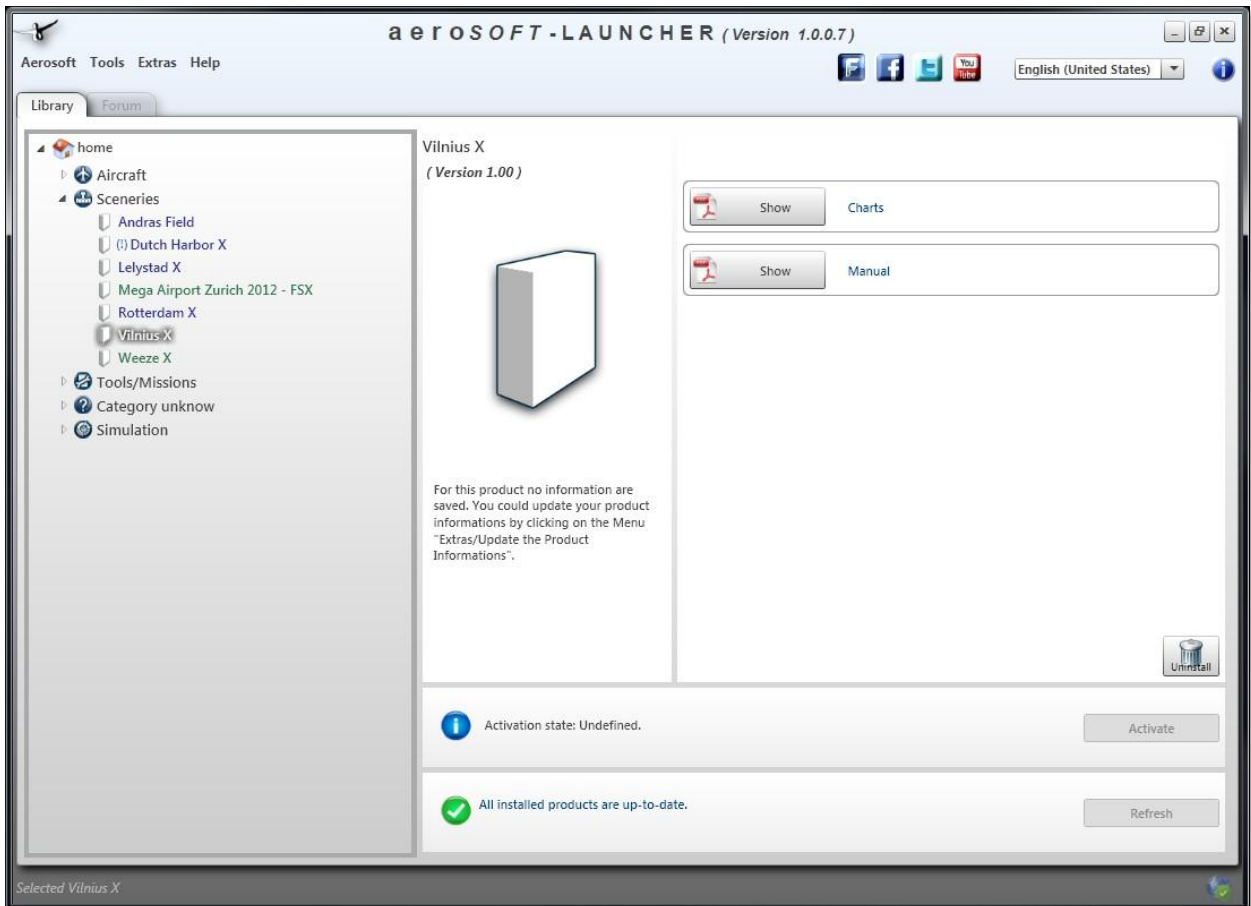
Q: AI aircraft are not shown.

A: Disable aircraft shadows and they will show.

AEROSOFT LAUNCHER (ONLY FOR FSX VERSION)

Like all our products Vilnius comes with the Aerosoft Launcher that serves as a central point for all your updates and provides easy links to all manuals and charts. Installation starts automatically at the end of the installation of the scenery. If it is already installed always select the update option.

Note that this product does NOT to be activated to run so you will see the Activation state always as 'Undefined'.



CHARTS

You will find a full set of aviation charts with this product. These are provided by the Lithuanian Aviation Authorities. It's obvious these should never be used for real aviation! You can open the charts via the Aerosoft Launcher or via the Windows Start menu under Aerosoft | Vilnius.