

Aerosoft

Santorini X



aerosoft™

Index

Index	2
Introduction	3
System requirements	3
Credits.....	3
Copyrights	4
Removing the scenery	4
Coverage	5
Compatibility with other scenery	5
Charts.....	5
Settings & Frame rates	6
Display Settings	6
Scenery settings	7
Weather settings	8
Traffic settings	9
Data	10
FAQ.....	11

Introduction

The current Santorini was born with a bang. One of the biggest bangs ever heard in fact. Around 3600 BC a big volcano exploded leaving a caldera that is partly above sea level and that is what is now known as Santorini. It is clear there was an advanced civilization before the volcano exploded but finding remains is hard because of the turn of events. The volcano is not dead; in the middle of the caldera is a new volcano that slowly grows. As recent as 1950 there was a major eruption (even in this scenery project, just set the date to 1950). It's now an attractive holiday destination, both for people who stay there a while or people who visit on the many cruise liners that stop there.

Because of the stunning setting and the surprising layout it was an obvious choice for a scenery project and we are happy that Mat Dalton decided it for us. It a great place to fly to in an airliner and then use a helicopter or small aircraft to explore the other side of the island.

System requirements

- Microsoft Flight Simulator FSX SP2 (or Acceleration)
- Windows XP/Vista/Windows 7 (fully updated)
- 2.0 GHz processor (Intel Core 2 Duo highly recommended)
- 2 GB RAM internal memory
- 256 MB graphic card (512 Mb highly recommended)
- PDF reader for manual

Credits

Concept:	Matthew Dalton
Programming:	Matthew Dalton
Project Management:	Matthew Dalton, Mathijs Kok
Manual, documentation:	Mathijs Kok
Installer:	Aerosoft
Testing:	Several good folks who will all be getting a free copy



Copyrights

The manual, documentation, video images, software, and all the related materials are copyrighted and cannot be copied, photocopied, translated or reduced to any electronic medium or machine legible form, neither completely nor in part, without the previous written consent of AEROSOFT. THE SOFTWARE IS FURNISHED «AS IS» AND IT DOES NOT COME FURNISHED WITH ANY GUARANTEE IMPLICIT OR EXPRESS. THE AUTHOR DECLINES EVERY RESPONSIBILITY FOR CONTINGENT MALFUNCTIONS, DECELERATION, AND ANY DRAWBACK THAT SHOULD ARISE, USING THIS SOFTWARE.

Copyright © 2010 AEROSOFT & Matthew Dalton. All rights reserved. Windows®XP, Vista Windows 7 and Flight Simulator X are either registered trademarks or trademarks of Microsoft Corporation in the United States and/or other countries. All trademarks and brand names are trademarks or registered trademarks of the respective owners.

Copyrights are serious stuff. If you find any pirated copies of this software please notify us at support@aerosoft.com. We will make sure reports of copyrights violation are rewarded when they lead to any result.

Aerosoft GmbH
Lindberghring 12
D-33142 Büren, Germany
www.aerosoft.com

Contact support

Support for this product is offered by Aerosoft. We prefer to have a support forum for the simple reason that it is fast and efficient because customers help customers when we are sleeping:

<http://www.forum.aerosoft.com>

and we advise the **Customer Support > Scenery Discussions & Support** section for any questions on this product. This should be your first stop for any support.

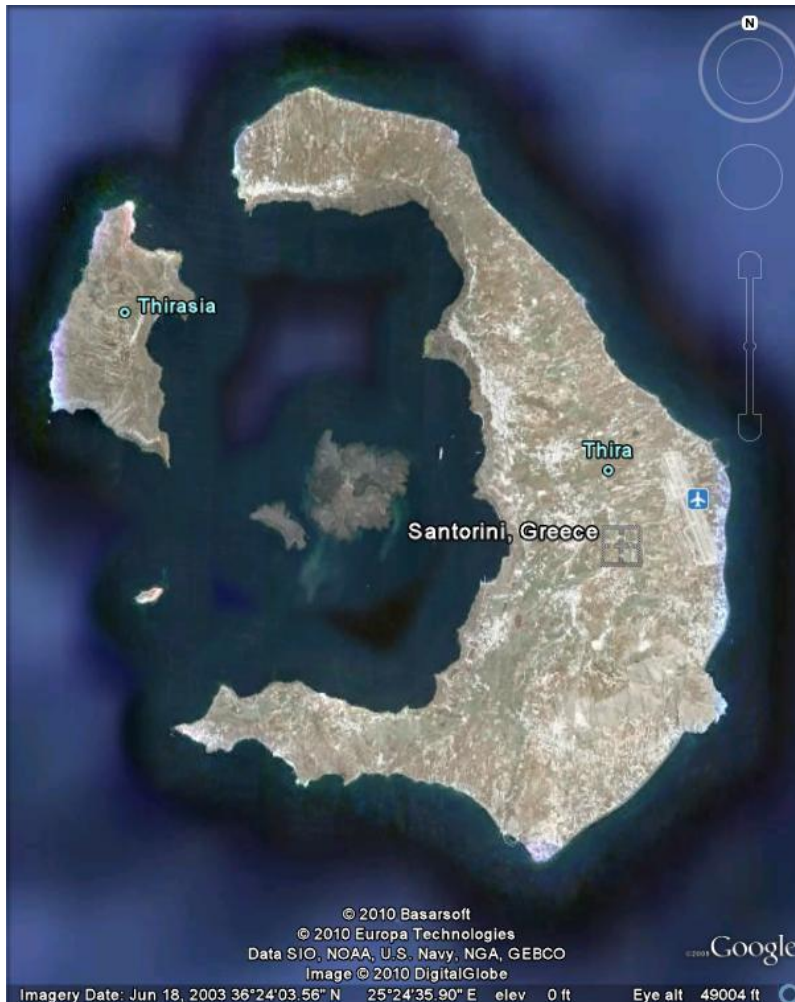
If you prefer support by email do accept that this could take a bit longer as it might be send from persons to person and that email support in the weekends is always slow: support@aerosoft.com. We feel strongly about support. Buying one of our products gives you the right to waste our time with questions you feel might be silly. They are not.

Removing the scenery

Never remove the product manually, always used the control panel applet to do so. Failing to do so could create serious problems.

Coverage

This scenery covers the complete Santorini island group with all villages and the main airport (Santorini Thira National airport, **LGSR**) in great detail. This scenery shows the island in the hot dry late summer season (because that's what most tourists know). So do not expect island to be very green. The main platform of the airport is a very light concrete that will show almost white in this season.



Compatibility with other scenery

As far as we have tested this product is compatible with all existing scenery covering the same area assuming you follow information given here. Aerosoft however can only guarantee compatibility with a standard FSX. Discuss this on the forum with us if you have questions.

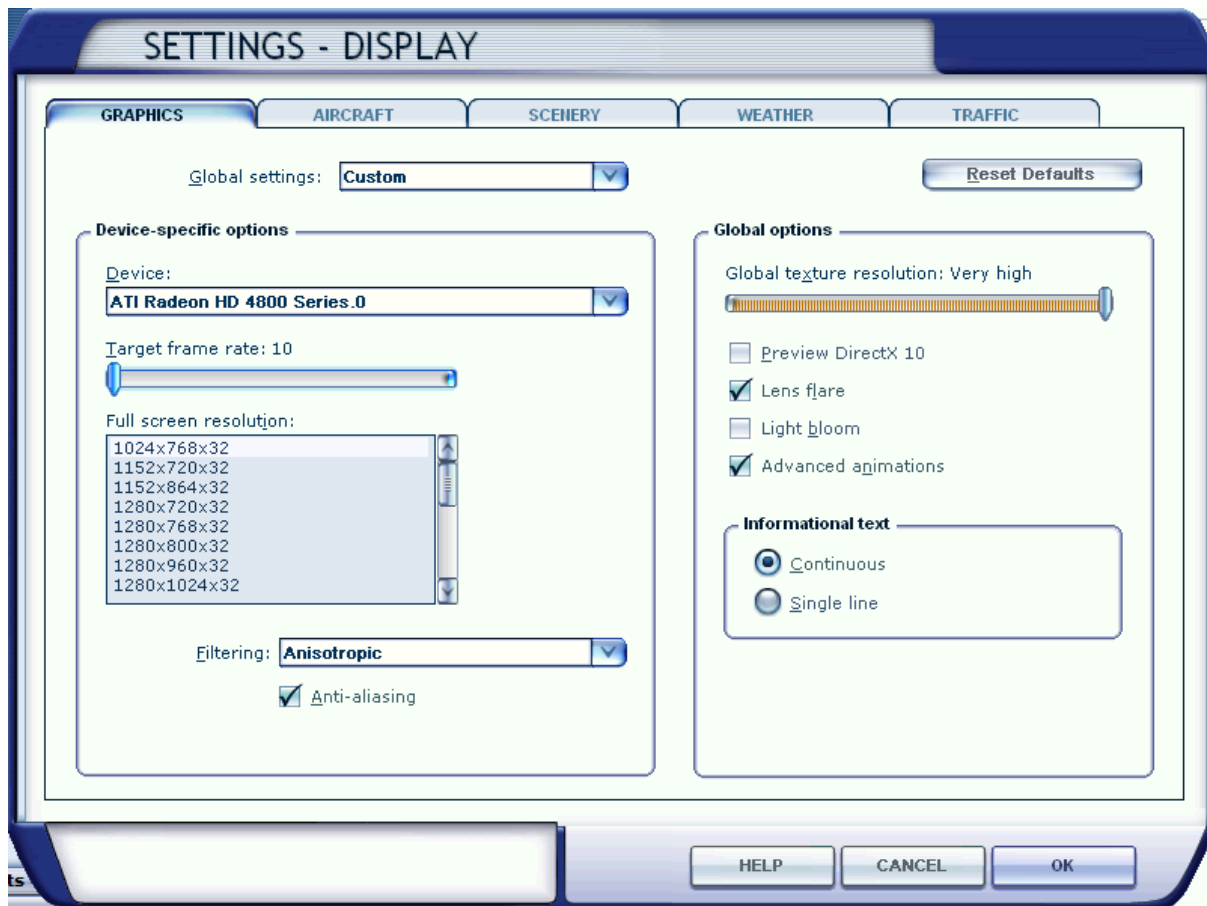
Charts

The Greek state is not as easy as other nations about aviation charts. We were not able to include any charts and there is not official online source for these charts. However a quick Google search using the keywords Santorini airport charts will lead you to several sources that will help you out.

Settings & Frame rates

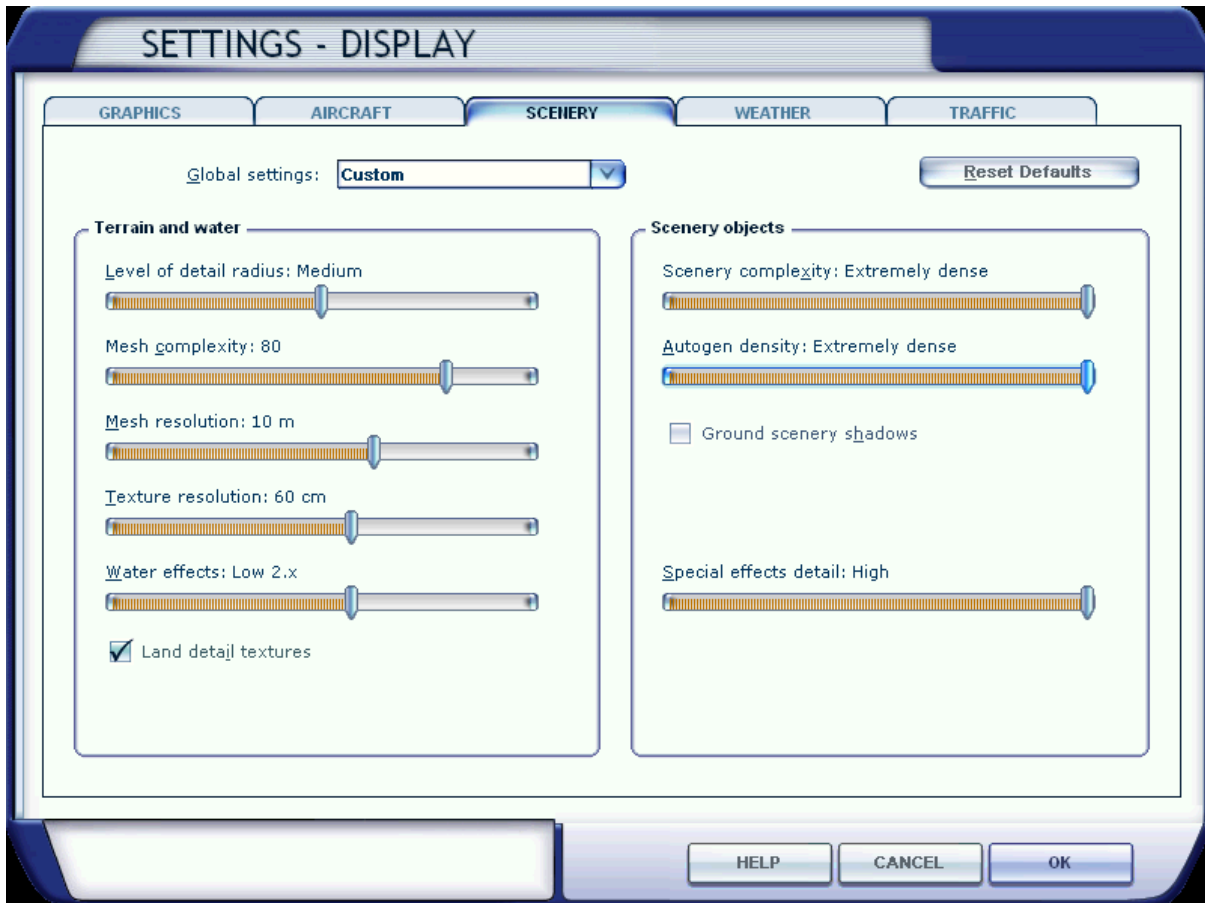
We advise these setting for the best combination of looks and frame rates. Do note that the settings are a bit different then for most scenery projects. We advise you to stay in Summer.

Display Settings



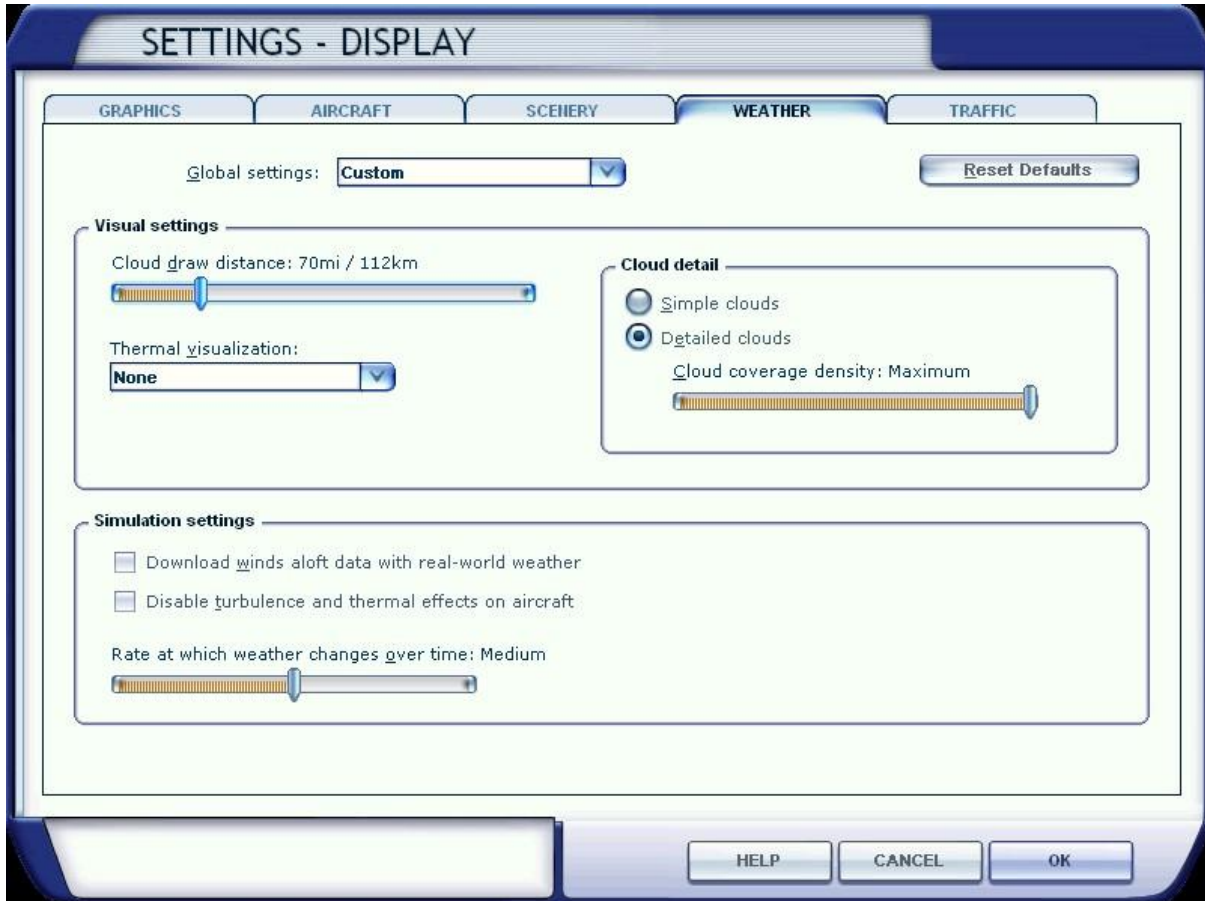
The **Global texture** setting needs to be on VERY HIGH, the other settings are not critical.

Scenery settings



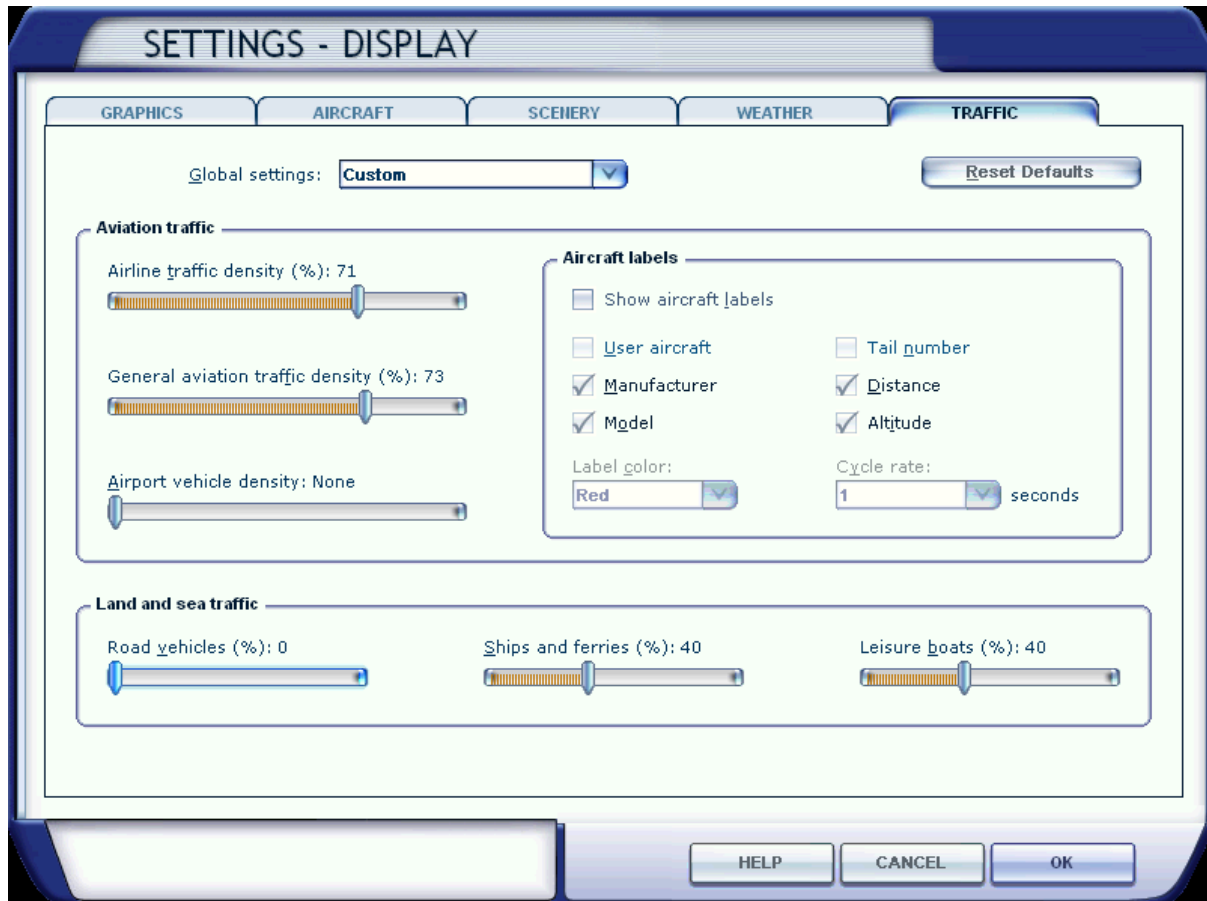
In the Scenery display settings the Mesh resolution at 10 meter and Scenery complexity at Extremely dense are important. There is massive Autogen and the shown Extremely dense setting can only be used on the fastest of machines. A medium setting looks pretty good however.

Weather settings



Weather settings are fully up to your liking but you most likely have enough frame rates to use a good looking high definition setting. Of course a pure blue sky with just a hint of clouds is most suitable.

Traffic settings



There are no cars on the road (the terrain makes that very hard to do), but do keep boat and aircraft density settings high.

Data

Location	Thira (Santorini), Cyclades Prefecture, South Aegean Sea
ARP co-ordinates and site at AD	36.399169 360 23' 57.01" North 25.479333 0250 28' 45.60" East
Major Town serviced	Fira at 7 Km
Elevation	127 feet (39 meters)
MAG VAR / annual change	003° E (2010)
Use	Aerodrome available for national and international civil air traffic with all types of aircraft,
Information	TOWER 118.05, APP 118.05
Acceptable types	B-757-200, B-737-800, B-737-300/-400/-500, A-321, A-320, Avro RJ-100, Fokker 70, ATR-42/-72
Scheduled flights	Olympic Airlines, Aegean Airlines, Athensairways, Corsair, Aero Lloyd, Finnair, Austrian Airlines, Britannia Airways Sweden, Maersk Air, Sobelair, Braathens, Deutsche BA, Novair - Nova Airlines, CSA Czech Airlines, SAS - Scandinavian Airlines System, Transavia, Livingston Energy Flight, Eurofly, Martinair, Edelweiss Air, Adria Airways, Excel Airways, Azzurra Air, Thomas Cook Airlines, Air Scandic International

Rwy	True °	Dimensions	Surface	Lights	PAPI
34R/16L	339°/159°	6972x98 ft 2125x30 m	Asphalt	SF, REIL A1	Left 03%
34L/16R	159°/339°	6972x98 ft 2125x30 m	Asphalt	SF, REIL A1	Left 03%

System	ID	Channel	Type	Freq
Terminal VOR/DME	SNI	041X	DVOR/DME	110.4
LOCATOR	THR	-	NDB	307
TACAN	SAN	111X	-	116.4

FAQ

Some issues you might encounter and that we like to explain.

Q: Why is the Autogen control file tweaked?

A: Because it is the only way to get the needed buildings in the right location. A backup file is made (in the FSXMainFolder\Autogen folder) and when you de-install the product the adaptations are reverted to the original.